

ARDEN P.U.D. POD E NORTH

BEING A REPLAT OF A PORTION OF TRACT "FD", ARDEN P.U.D. PLAT 1, AS RECORDED IN PLAT BOOK 122, PAGES 32 THROUGH 51, PUBLIC RECORDS OF PALM BEACH COUNTY, FLORIDA, AND LYING IN SECTIONS, 27, 28, 33 AND 34, TOWNSHIP 43 SOUTH, RANGE 40 EAST, PALM BEACH COUNTY, FLORIDA.

SHEET 3 OF 4

154

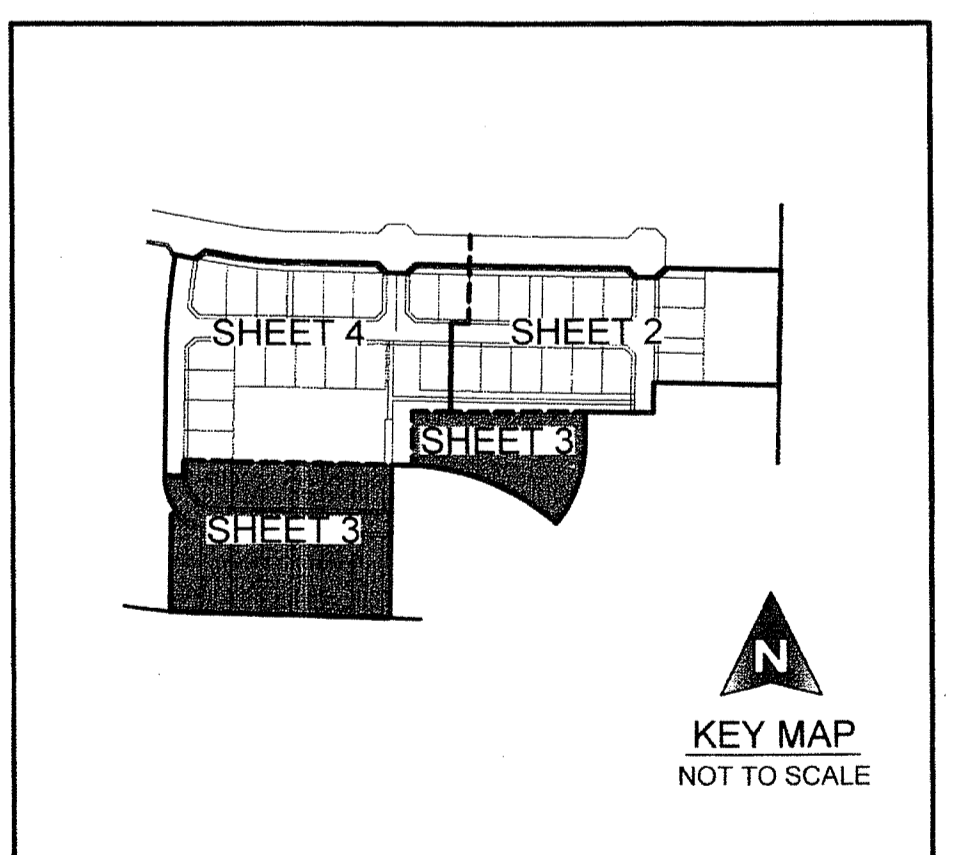
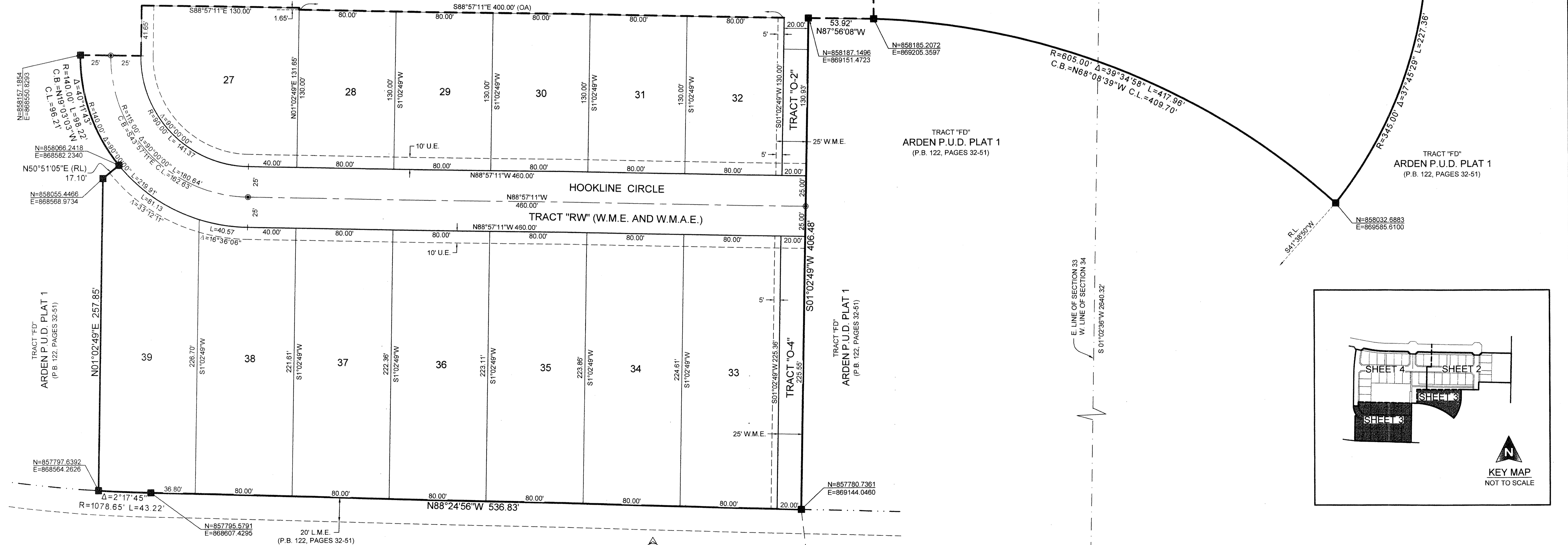
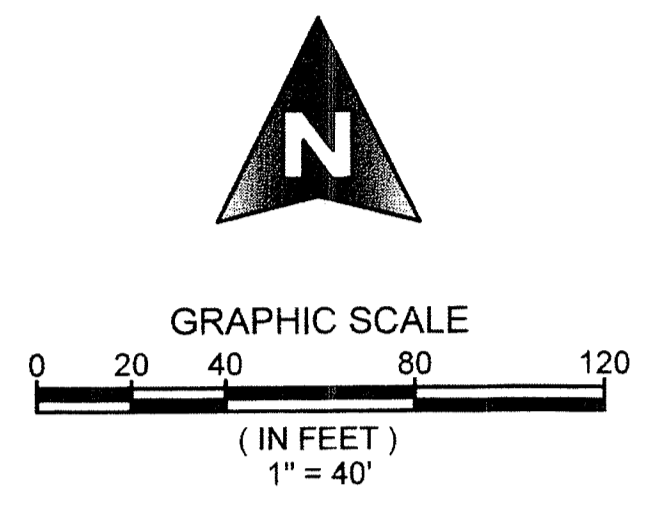
COUNTY OF PALM BEACH)
 STATE OF FLORIDA) SS

THIS PLAT WAS FILED FOR RECORD AT _____ M. THIS _____ DAY OF _____, 2016, AND DULY RECORDED IN PLAT BOOK NO. _____ ON PAGE _____ THRU _____

SHARON R. BOCK,
 CLERK AND COMPTROLLER

BY: _____, D.C.

- LEGEND** 5168-004
- P.O.C. = POINT OF COMMENCEMENT
 - P.O.B. = POINT OF BEGINNING
 - P.C.P. = PERMANENT CONTROL POINT
 - P.R.M. = PERMANENT REFERENCE MONUMENT
 - O.R.B. = OFFICIAL RECORD BOOK
 - P.B. = PLAT BOOK
 - P.G.S. = PAGES
 - D.B. = DEED BOOK
 - P.B.C. = PALM BEACH COUNTY
 - R/W. = RIGHT OF WAY
 - C. = CENTERLINE
 - U.E. = UTILITY EASEMENT
 - D.E. = DRAINAGE EASEMENT
 - R. = RADIUS
 - L. = ARC LENGTH
 - Δ = CURVE CENTRAL ANGLE
 - ⊙ = DENOTES FOUND PALM BEACH COUNTY DISK IN CONCRETE
 - ⊙ = SET NAIL AND ALUMINUM DISK, STAMPED P.C.P. L.B. 2438
 - ⊙ = SET 4"x4"x24" C.M. WITH ALUMINUM DISK, STAMPED P.R.M. L.B. 2438
 - = DENOTES FOUND P.R.M. (AS SHOWN IF ANY)
 - C.L. = CHORD LENGTH
 - C.B. = CHORD BEARING
 - L.M.A.E. = LAKE MAINTENANCE ACCESS EASEMENT
 - R.L. = RADIAL LINE
 - N. = NORTHING, WHEN USED WITH COORDINATES
 - E. = EASTING, WHEN USED WITH COORDINATES
 - L.B.E. = LANDSCAPE BUFFER EASEMENT
 - L.A.E. = LIMITED ACCESS EASEMENT
 - L.S.E. = LIFT STATION EASEMENT
 - FD. = FOUND
 - O.A. = OVERALL
 - C.M. = CONCRETE MONUMENT
 - F.P.L. = FLORIDA POWER AND LIGHT
 - L.E. = LANDSCAPE EASEMENT
 - P.E. = PATHWAY EASEMENT
 - P.B.C.U.E. = PALM BEACH COUNTY UTILITY EASEMENT
 - W.M.E. = WATER MANAGEMENT EASEMENT
 - W.M.A.E. = WATER MANAGEMENT ACCESS EASEMENT
 - O.H.M.E. = OVERHANG MAINTENANCE EASEMENT
 - P.S.M. = PROFESSIONAL SURVEYOR AND MAPPER
 - NO. = NUMBER
 - P.U.D. = PLAN UNIT DEVELOPMENT



COORDINATE NOTE:
 COORDINATES SHOWN ARE GRID DATUM, NAD 83 1990 ADJUSTMENT, FLORIDA EAST ZONE, COORDINATE SYSTEM 1983 STATE PLANE, TRANSVERSE MERCATOR PROJECTION
 LINEAR UNIT = US SURVEY FEET
 ALL DISTANCES ARE GROUND
 SCALE FACTOR = 0.99999219
 GROUND DISTANCE X SCALE FACTOR = GRID DISTANCE

TRACT "L-2"
 (WATER MANAGEMENT TRACT)
 ARDEN P.U.D. PLAT 1
 (P.B. 122, PAGES 32-51)

N=859196.4630
 E=864027.7710
 FOUND PALM BEACH COUNTY
 BRASS DISK IN CONCRETE
 STAMPED "LEVEE 1"

N=855207.8820
 E=869444.1640
 FOUND PALM BEACH COUNTY
 BRASS DISK IN ROUND CONCRETE
 MONUMENT STAMPED "CATHY"

E 1/4 CORNER OF SECTION 33 AND
 THE W 1/4 CORNER OF SECTION 34
 CALCULATED POSITION
 N=855927.9140, E=869349.5975



MICHAEL B. SCHORAH & ASSOCIATES, INC.
 1850 FOREST HILL BLVD., SUITE 206
 WEST PALM BEACH, FLORIDA 33406
 EBN# 2438 TEL. (561) 968-0080 FAX. (561) 642-9726 LB# 2438

ARDEN P.U.D. POD E NORTH